



ROOFING & PROFILES (FIJI) PTE LTD

Build With Confidence

RPFL HQ FOIL FACED GLASS WOOL BLANKET

Advanced Insulation for Superior Protection



✉ info@roofingandprofiles.com.fj
🌐 www.roofingandprofiles.com.fj

Product characteristic

RPFL HQ FOIL FACED GLASS WOOL BLANKET is a lightweight, flexible insulation material manufactured from long, resilient glass fibers bonded with a thermosetting resin. This blanket delivers excellent structural stability along with superior thermal and acoustic insulation performance, while remaining easy to handle and install.

Designed to meet a wide range of residential, commercial, and industrial insulation needs, RPFL HQ FOIL FACED GLASS WOOL BLANKET complies with leading international standards (EN, ASTM, AS/NZS).

The product is available in multiple colour options, including yellow, white, pink, and brown. A variety of facing materials are also offered, such as Foil, FSK, Kraft, PVC, WMP, and black glass fiber tissue (BGT), allowing flexibility for different installation and performance requirements.

Physical Properties

PROPERTY		STANDARD	PERFORMANCE
Density		AS 4859.1	12 kg/m ³
Average Fiber Diameter			7-8 µm
Maximum Service Temperature		AS 1530.4	850°F (454°C)
Thermal Conductivity		AS 4859.1 Appendix B	0.048 (W/m·K) (25°C)
Corrosiveness		AS 1530.3	Meets requirements
Fungi Resistance		AS ISO 846	Meets requirements
Shot Content		AS 4859.1 Clause 7.2	≤0.3% (Particle size >0.25mm)
Moisture Absorption		AS 4859.1 Clause 10.3	<1% by weight
Combustion Performance	Surface Burning Characteristics	AS 1530.3	Flame Spread: ≤5
		AS 5637.2	Smoke Developed: 50
	Flammability Test	AS 1530.2	Non Combustible

ASBESTOS FREE

PRODUCT CODE	BASE BLANKET R VALUE (M ² K/W)	THICKNESS (MM)	WIDTH (MM)	LENGTH (M)	AREA PER ROLL (M ²)	PIECES PER PACK
InsulRof 60*	R1.3	60	1200	15	18	1
InsulRof 70	R1.4	70	1200	15 or 20	18 or 24	1
InsulRof 80	R1.8	80	1200	15	18	1
InsulRof 90	R2.0	90	1200	15 or 10	18 or 12	1
InsulRof 100	R2.3	100	1200	10	12	1
InsulRof 110*	R2.5	110	1200	10	12	1
InsulRof 130	R3.0	130	1200	10	12	1
InsulRof 140	R3.3	140	1200	7.5	9	1
InsulRof 150	R3.6	150	1200	7.5	9	1

- Durable, life-time performance
- Euro fire classification: A1
- Non-combustible
- Asbestos Free
- Environment friendly
- Excellent structural stability
- Superior thermal performance
- Easy to handle and install
- Designed to meet a wide range of residential, commercial and industrial needs
- Complies with leading international standards (AS/NZS 4859.1 & ASTM, AS/NZS 1530.3:1999)



*Available Ex-stock.



ROOFING & PROFILES (FIJI) PTE LTD
Build With Confidence



✉ info@roofingandprofiles.com.fj

🌐 www.roofingandprofiles.com.fj

**RPFL HQ FOIL FACED
GLASS WOOL BLANKET**

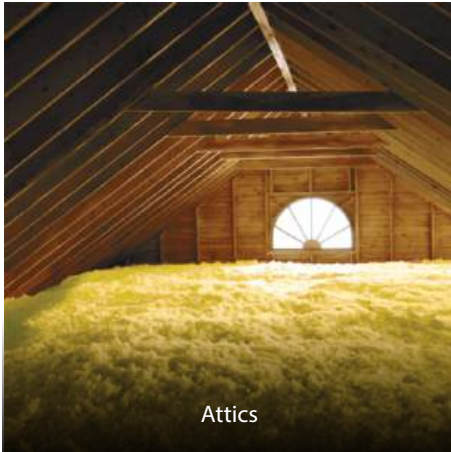
Application

RPFL HQ FOIL FACED GLASS WOOL BLANKET is lightweight and easy to install, making it suitable for a wide range of residential, commercial, and industrial applications. It can be used in roofs, attics, floors, interior partition walls, exterior walls, suspended ceilings, steel structures, prefabricated buildings, and HVAC ducting systems. The product is also suitable for insulating hot or cold surfaces on pipes, tanks, vessels, ducts, and other round or irregularly shaped equipment.

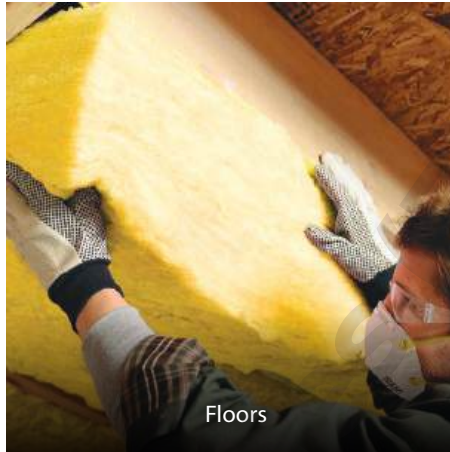
Designed to cover large installation areas efficiently, RPFL HQ FOIL FACED GLASS WOOL BLANKET provides excellent thermal insulation along with shock absorption and acoustic damping. Its strong performance in mid- to low-frequency sound control helps reduce noise transmission and enhances overall comfort in living and working environments.

The material can be easily cut on-site to match any required shape, making it ideal for room insulation, noise-reduction systems, transport vehicles, refrigeration units, and household appliances.

The aluminum-foil-faced version of RPFL HQ FOIL FACED GLASS WOOL BLANKET offers enhanced radiant heat protection, making it suitable for high-temperature areas such as workshops, control rooms, machinery spaces, and partitions where additional heat shielding is needed.



Attics



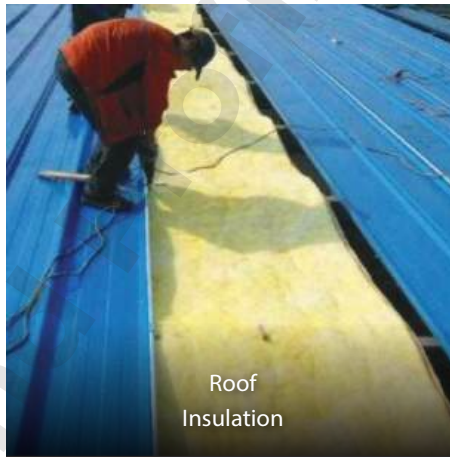
Floors



Indoor Partition
Wall



Building Exterior
Wall Insulation



Roof
Insulation



Steel Structure
Insulation



Roof
Insulation



Prefabricated
Houses



Heat and Sound
Insulation for HVAC Duct

Package

Packing Material: Inner packing is PVC bag (vacuumed packing); Outside packing is woven fabric bag/PP/PE bag.



ROOFING & PROFILES (FIJI) PTE LTD
Build With Confidence



✉ info@roofingandprofiles.com.fj

🌐 www.roofingandprofiles.com.fj

**RPFL HQ FOIL FACED
GLASS WOOL BLANKET**